

Application News



How to create a new sub-preset



How to create a new sub-preset (ex within the abdominal, create a "superficial kidney")

To create a sub-preset, within an already existing preset (ex. "superficial kidney" in the "abdominal" preset):

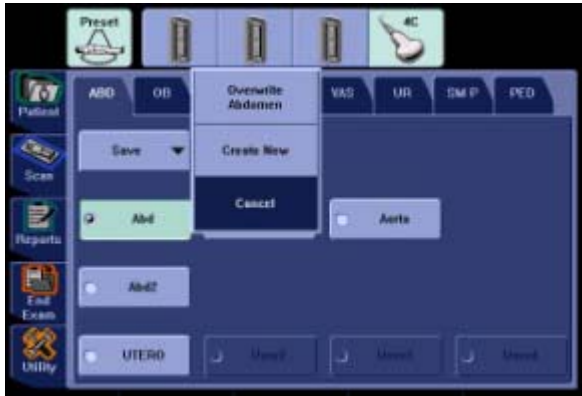
1. From the Touchscreen, select the transducer and the preset that needs a sub-preset



2. Adjust the Image B-Mode and CFM parameters as more suitable for the selected anatomy



3. Press the "Preset" Tab on the Touchscreen
4. Press "Save" and "Create New". The following window will appear.



5. Choose among User 1-4.



6. Name the new Sub-Preset



7. Click on save.

Should you wish only to change the Abdominal Preset with the new settings, at step 4 must select "Overwrite Abdomen".