

# Application News



## LOGIQ® E9 Scan Assistant Quick Card

### Patient Information Screen

1. Select Exam Category.
2. Select Operator.
3. Select Scan Assistant Program from the drop down menu.

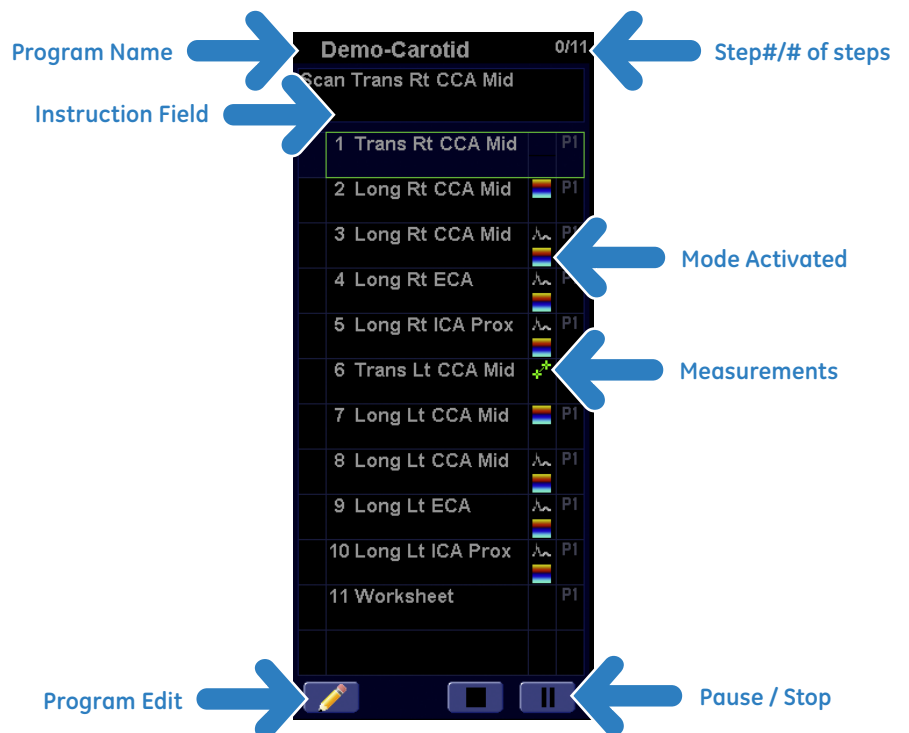


Once Scan Assistant Program is selected, unfreeze or push SCAN on touch panel to get to the scan screen, your first step is ready with the comments.



The first step will highlight on Scan Assistant Menu and the first annotation will appear. FREEZE and PRINT will store the image and advance to the next step.

Once the image is acquired, hitting the Print Key advances you to the next step (if programmed to advance on print).



---

## LOGIQ® E9 Scan Assistant Quick Card



### Navigating through Steps

Up and Down arrow keys on the keyboard let you **skip a step** or go back to a step. If the skipped step was assigned as a mandatory step, the program will revert back to it at the end of the exam.

The Left and Right arrow keys on the keyboard will **pause and un-pause the Program**. This is helpful if additional images are required for any given steps.

**To Stop a Program:** Select the STOP icon from the Scan Assistant menu on the monitor.

---

## Hints and Tips

When in **split screens**, use the L and R keys to activate the side you want and then hit freeze and print key to advance to the next step.

**Assigned B-Mode measurements** pop-up in a step that requires measurement. Use the set keys to measure and print to advance to next step. Hit the measure key if you need to cine, as this will take you out of measurements). Cine to desired point, then hit measure again to take a measurement.

In a **Color Flow** step, color box comes up. You can make any changes you want to CF settings. Print Key will advance you to the next step.

In a **PW step**, the cursor comes up with Cursor tab, adjust the Doppler cursor and angle, and then hit the Right Set/PW key to activate the PW. Use the same Right Set/Update key to adjust the PW.

**PW measurements are assigned** to the vessel when the Print Key is pushed, if the program is set up to do so.

If you need to **skip several steps**, pause the program, arrow to or highlight the desired step, then un-pause.

