

GE Healthcare



LOGIQ S8

Simply amazing

healthymagination



imagination at work



LOGIQ* S8 ultrasound system

provides a balance of price and performance in a lightweight, portable design.



SUPERB IMAGING

to help enhance clinical confidence

LOGIQ S8 S-Agile Architecture, combined with the expansive family of E-Series transducers, helps provide superb image quality in a wide range of clinical applications.

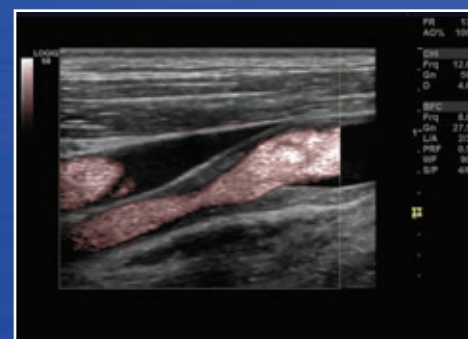
Features that help deliver additional imaging capabilities

- **B-Flow** uses non-Doppler technology to display true hemodynamics and enable direct visualization of blood flow without the limitations of Doppler.
- **Elastography** for a wide range of applications helps enhance diagnostic confidence in tissue stiffness assessment.
- **High-definition Speckle Reduction Imaging (SRI-HD)** and **CrossXBeam*** technologies help increase contrast resolution and tissue definition.
- **Coded Harmonic Imaging** helps improve near-field resolution for enhanced small parts imaging as well as far-field penetration compared with traditional harmonic imaging.
- **LOGIQ View** displays images over an extended length of anatomy, helping provide excellent visualization and more clinical information.

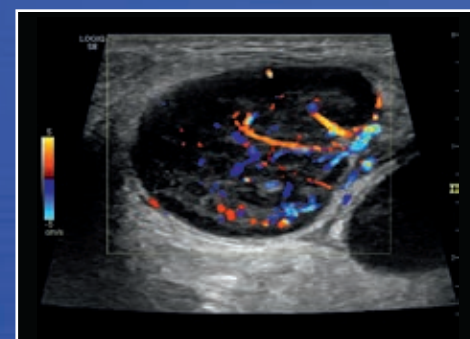
Simply amazing



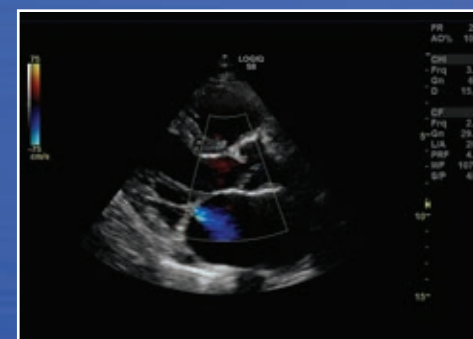
Splenic vasculature demonstrated with B-Flow* imaging



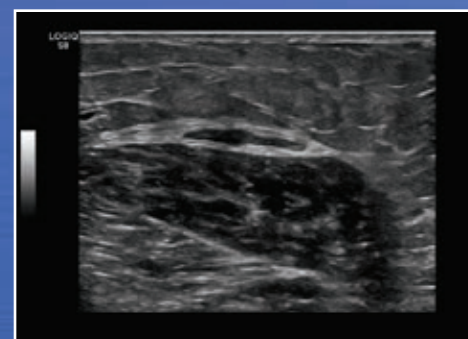
Carotid artery shown with B-Flow color



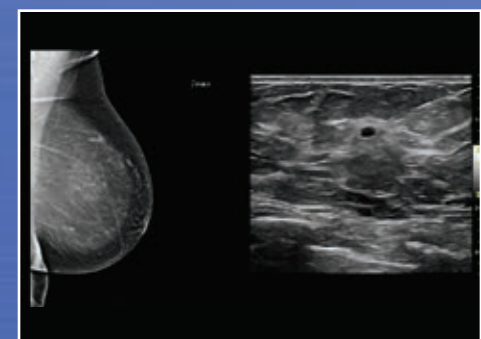
Outstanding color flow sensitivity in the small vessels of this abnormal lymph node



Cardiac image using M5S-D transducer and Color Doppler



Gastrocnemius muscle image shown using ML6-15-D transducer



Ultrasound breast image with digital mammogram shown in DualView

STREAMLINED WORKFLOW

to help enhance productivity and scanning comfort

The LOGIQ S8 provides easy-to-use tools that help busy departments and practices enhance workflow.

- **Compare Assistant** allows the user to easily retrieve a prior study and view it in split screen while performing the current study. This enables prior views and scanning parameters to be replicated, helping to provide consistency and enabling confident interpretations.
- **Automated measurement tools** help streamline measurement intensive exams such as breast, cardiac, vascular and obstetrics, with user-guided automatic measurements that can be easily edited or accepted.
- **Productivity Packages** for breast and thyroid exams enable the user to label, measure, and describe anatomy quickly and confidently – plus generate DICOM® SR compatible summaries.
- **Auto Optimization** helps achieve excellent images and optimize Spectral Doppler with one keystroke.
- **GE Raw Data** enables a wide variety of image processing after the exam ends, helping save time and enhance workflow.
- **Scan Assistant** helps reduce keystrokes¹ and exam time with the simple touch of a button.
- **Power Assistant** provides the system battery power during transport to help decrease system shut-down and reboot time by 90%² – helping achieve excellent productivity for high quality, portable exams.



SUITED TO YOUR NEEDS

to assist with your clinical applications

The LOGIQ S8 ultrasound system enables you to provide excellent care to your patients. We are committed to providing you superb imaging and simplified workflow in a system that is scalable to your needs – helping you make confident decisions and supporting your clinical needs. Applications include abdominal, musculoskeletal, small parts, breast, vascular, OB/GYN, cardiology, pediatrics and more.

Streamlined archiving and reporting

LOGIQ S8 provides robust DICOM connectivity and is compatible with many imaging IT solutions. This connectivity allows you to save images to a central location and review alongside other imaging modalities. With ViewPoint* 6, GE Healthcare's reporting and image management solution, users can connect with a PACS or Electronic Medical Record (EMR) for comprehensive patient record storage.



> Scan with ease

Nine out of 10 sonographers scan in pain.³ The LOGIQ S8 is designed to help reduce the awkward postures and musculoskeletal stressors that impact user comfort and productivity. The LOGIQ S8's extreme adjustability easily accommodates the stature and working style of each sonographer. Its thoughtful ergonomics help to reduce user fatigue and risk of injury, while enabling quality exams and efficient workflow.

19" LCD monitor on an articulated arm moves vertically and horizontally to help achieve an optimal viewing angle.

Large touch panel displays relevant menus at the user's fingertips.

Control panel swivels and moves up/down independently from the monitor for comfortable positioning at bedside. The intuitive layout includes user-friendly keys and backlit controls.

Probe holders on both sides of the operating panel keep transducers available at your fingertips.

At a svelte 187 lbs., the LOGIQ S8 rolls easily across carpets or hard surfaces, and maneuvers nimbly in confined spaces.

Convenient wireless transmission of patient data.

System adjusts to accommodate users short or tall, whether the user is sitting or standing.

Four active pin-less ports and one parking slot enable convenience when working through a wide range of clinical applications.

Power Assistant provides battery power during transportation and decreases system shutdown and boot-up time.



The LOGIQ S8 follows the Society of Diagnostic Medical Sonographers (SDMS) ergonomic guidelines.⁴

> Strong investment value

For all its agility and power, the LOGIQ S8 is rock-solid in a critical area: investment value. Backed by a long-standing tradition of technology migration, GE has helped healthcare providers avoid the fast cycle of technology obsolescence. Highly affordable with a wide range of clinical applications, it offers the price-performance balance you're looking for in a general imaging ultrasound system.



At your service – throughout the relationship

With the LOGIQ S8 system, you can count on responsive service and support from GE Healthcare. We know that a long-term relationship depends on providing you with technologies and programs that truly help meet your needs.

- Clinical applications training and support
- Service contract solutions, including probe protection and InSite* remote diagnostics
- Financing and leasing options



Learn more about LOGIQ S8 by visiting our website.

For more information contact your GE Healthcare Sales Representative or call (888) 202-5528.

References

- ¹ Data provided from an Internal GE Study performed by a third party ultrasound ergonomics specialist.
- ² Data provided from an Internal GE Study performed by GE engineers comparing to the prior version of the LOGIQ S8.
- ³ *Journal of Diagnostic Medical Sonography*. November/December 2009 vol. 25 no. 6 287-299: *Work-Related Musculoskeletal Disorders (WRMSD) Among Registered Diagnostic Medical Sonographers and Vascular Technologists – A Representative Sample*; Kevin Evans, PHD, RT(R)(M)(BD), RDMS, RVS, FSDMS.

©2013 General Electric Company – All rights reserved.

General Electric Company reserves the right to make changes in specifications and features shown herein, or discontinue the product described at any time without notice or obligation. Contact your GE Representative for the most current information.

* GE, GE Monogram, LOGIQ, CrossXBeam, B-Flow, InSite and ViewPoint are trademarks of the General Electric Company.

GE Medical Systems Ultrasound & Primary Care Diagnostics, LLC, a General Electric company, doing business as GE Healthcare.

DICOM is a registered mark of the National Electrical Manufacturers Association. Third party trademarks are the property of their respective owners.

GE Healthcare
9900 Innovation Drive
Wauwatosa, WI 53226
U.S.A.
(888) 202-5528
www.gehealthcare.com

September 1, 2013
DOC1023645
ULT-0555-09.13-EN-US

