

# Upgrade your LOGIQ S7

Sensational performance, Smart design, Specialized capabilities

New technologies and transducers are now available for the LOGIQ™ S7 ultrasound system. Developed to help meet increasing needs for expanded imaging capabilities and exam productivity, these versatile options deliver quality performance in an easy to use and budget-friendly design.

## Sensational performance

**Windows® 7 Operating System** – This powerful operating system combined with 64 bit computing helps provide speed and advanced processing power.

**Broad range of transducers** – Eight new E-Series transducers help clinicians achieve image quality in more applications.

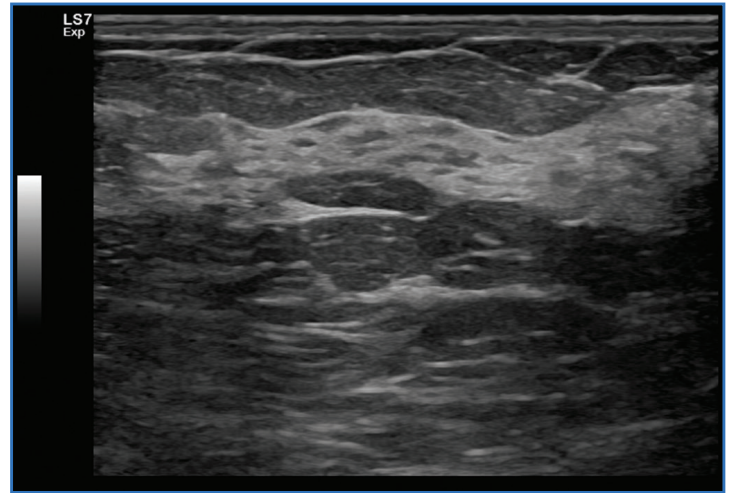
## Smart design

**Enhanced portability** – Go mobile with confidence using LOGIQ S7 portability features including WIFI connectivity, Bluetooth® printing, and the new Power Assistant.

**Power Assistant** – This battery feature helps enable clinicians to quickly perform portable exams by reducing power up and power down tasks by up to 90%<sup>1</sup>, critical to clinician efficiency as well as patient care.

**Compare Assistant** – This innovative tool helps reduce the time spent to find, open prior exams for side-by-side comparisons that assist in exam set-up to match the old exam and helps enable confident interpretations.

**Productivity packages and automated measurement tools** – These tools help streamline measurement intensive exams and enable the user to label, measure, and describe anatomy quickly and confidently – plus generates necessary reports.



Breast imaging using the L3-12-D transducer

## Specialized capabilities

Beyond its ability to scan a wide variety of body types, the LOGIQ S7 offers tools that help provide additional exam information, as well as enhance productivity and diagnostic confidence.

**Cardiac Package** – This tool includes AutoEF, physio input panel for ECG, ECG capable with long leads and clips, Tissue Velocity Imaging (TVI), and Q-analysis to plot the velocity information of discrete points for graphical analysis.

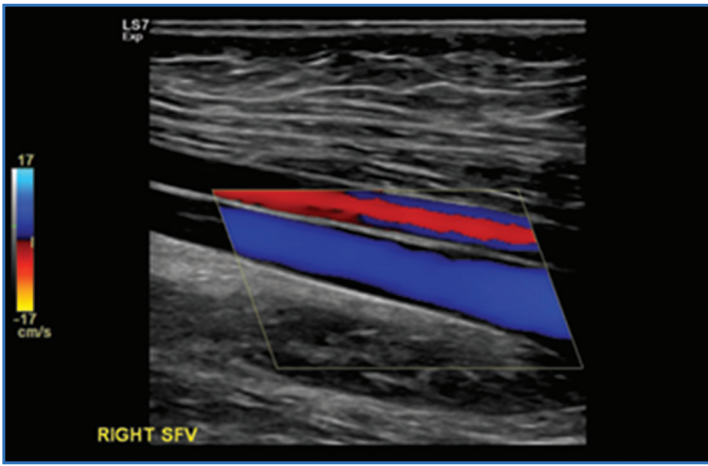
- **AutoEF** – Automated Ejection Fraction is a semi-automatic measurement tool used for measurement of the global EF via tracking of B-mode cine loops. Results are presented as Ejection Fraction values for each view, and average Ejection Fraction for the whole LV. After acceptance, all values are stored to the worksheet.

**Integrated Smart Stress Echo Package** – This tool helps users perform Image acquisition, review, image optimization, and wall segment scoring and reporting for a comprehensive, efficient stress echo examination. The system provides a protocol template for exercise and pharmacological stress examinations.

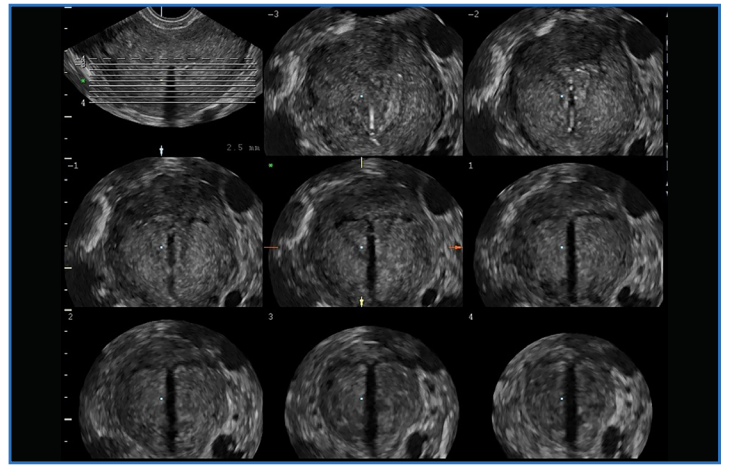


imagination at work

healthymagination



Color Doppler imaging of the SFV using the L3-12-D transducer



Endocavitary imaging using Tomographic Ultrasound Imaging (TUI) with the RIC5-9-D transducer

CLINICAL APPLICATION	TRANSDUCER
Abdominal	C1-5-D, 3CRF-D, 9L-D, <b>L3-12-D</b>
Vascular	ML6-15, 9L-D, P2D, P6D, <b>L3-12-D</b> , <b>S1-4-D</b>
Cardiology	3Sp-D, P2D, <b>S1-4-D</b> , <b>6S-D</b> , <b>6Tc-RS</b>
OB/GYN	RAB4-8-D, C1-5-D, IC5-9-D, <b>RIC5-9-D</b>
Breast	ML6-15, 11L-D, <b>L3-12-D</b>
Small Parts	ML6-15, 11L-D, L8-18i-D, <b>L3-12-D</b>
Pediatrics/Neonatal	8C, S4-10-D, <b>6S-D</b> , <b>10C-D</b>
Urology	IC5-9-D, <b>BE9CS</b> , <b>RIC5-9-D</b>
Intraoperative	L8-18i-D

Transducers in blue are new.

### Transducer care and protection

Transducers are valuable investments and require specific care and safeguards when handling. Visit [gehealthcare.com/transducers](http://gehealthcare.com/transducers) to find compatible disinfectants, cleaners and gels, as well as proper care and handling procedures. trophon® EPR from Nanosonics provides system helps provide an easy, high level method of transducer cleaning, find out more at [gehealthcare.com](http://gehealthcare.com).



LOGIQ Club is an online community for LOGIQ ultrasound users.

As a LOGIQ Club member you'll have access to:

- Educational tips and tricks
- Videos
- Product information
- Whitepapers
- And more!

Register at [www.logiqclub.net](http://www.logiqclub.net)

For more information, please contact your GE Healthcare Sales Representative or call (888) 202-5528.



Learn more about LOGIQ S7 by visiting us at [www.gehealthcare.com/ultrasound](http://www.gehealthcare.com/ultrasound) or scan the QR code.

1. Data provided from an Internal GE Study performed by GE engineers comparing to the prior version of the LOGIQ S8.

© 2014 General Electric Company – All rights reserved.

General Electric Company reserves the right to make changes in specifications and features shown herein, or discontinue the product described at any time without notice or obligation. Contact your GE Representative for the most current information.

GE, GE monogram, and LOGIQ are trademarks of General Electric Company or one of its subsidiaries.

trophon is a trademark of Nanosonics. Windows is a trademark of Microsoft Corporation. Bluetooth is a trademark of Bluetooth SIG Inc. Third party trademarks are the property of their respective owners.

GE Medical Systems Ultrasound & Primary Care Diagnostics, LLC, a General Electric company, doing business as GE Healthcare.

GE Healthcare  
9900 Innovation Drive  
Wauwatosa, WI 53226  
U.S.A.  
[www.gehealthcare.com](http://www.gehealthcare.com)